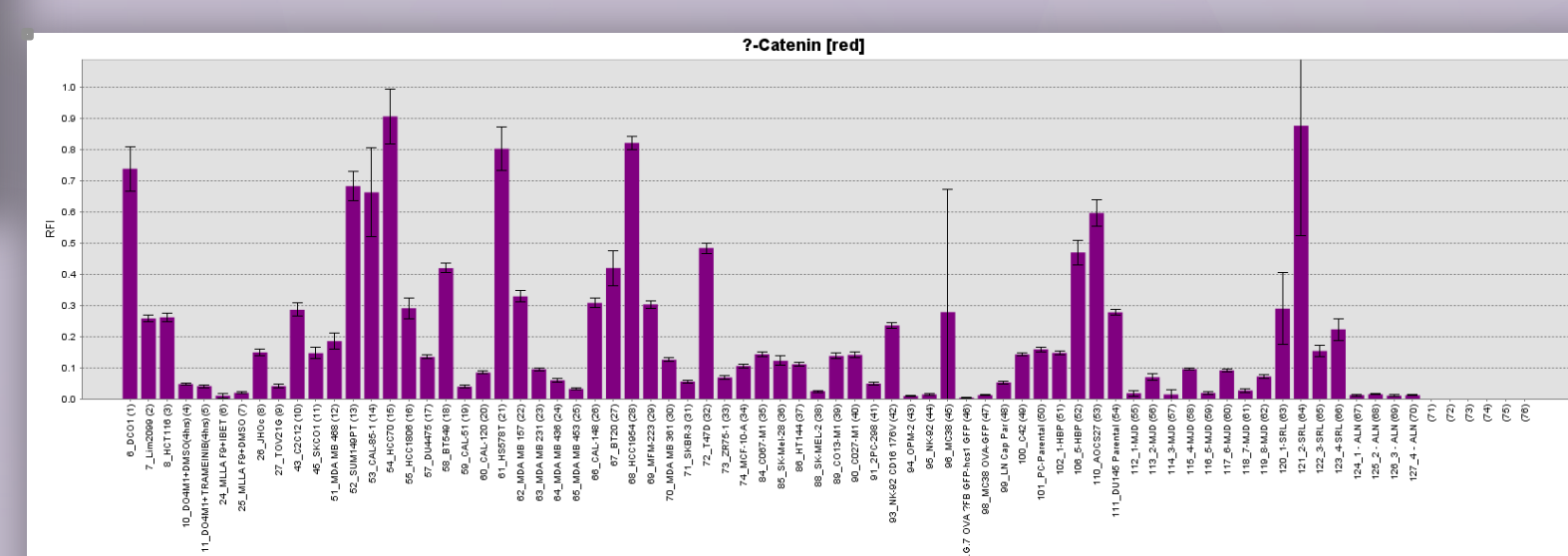
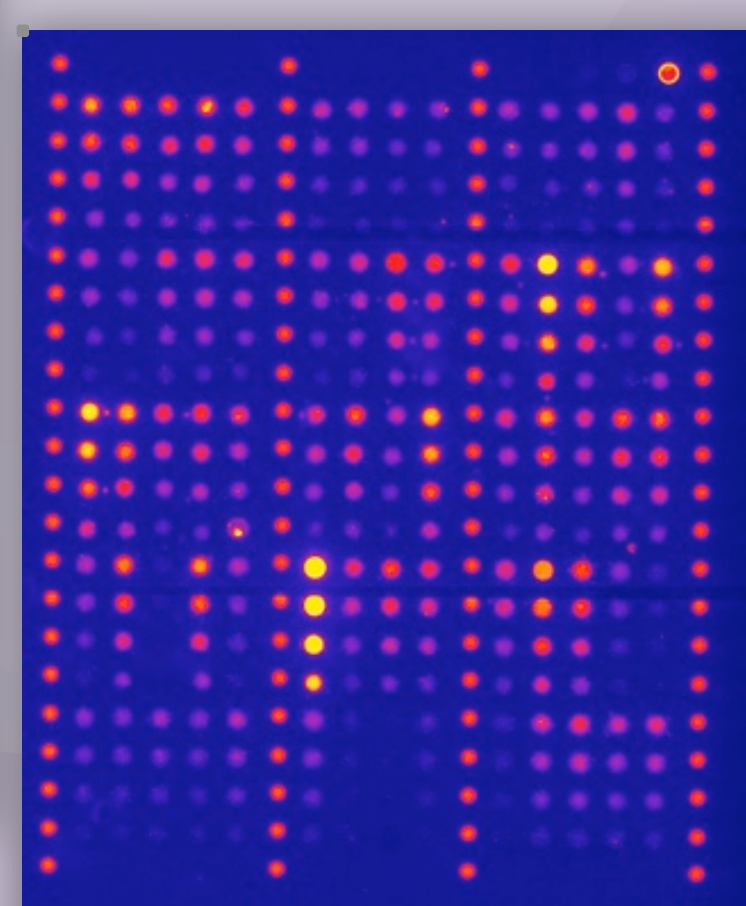
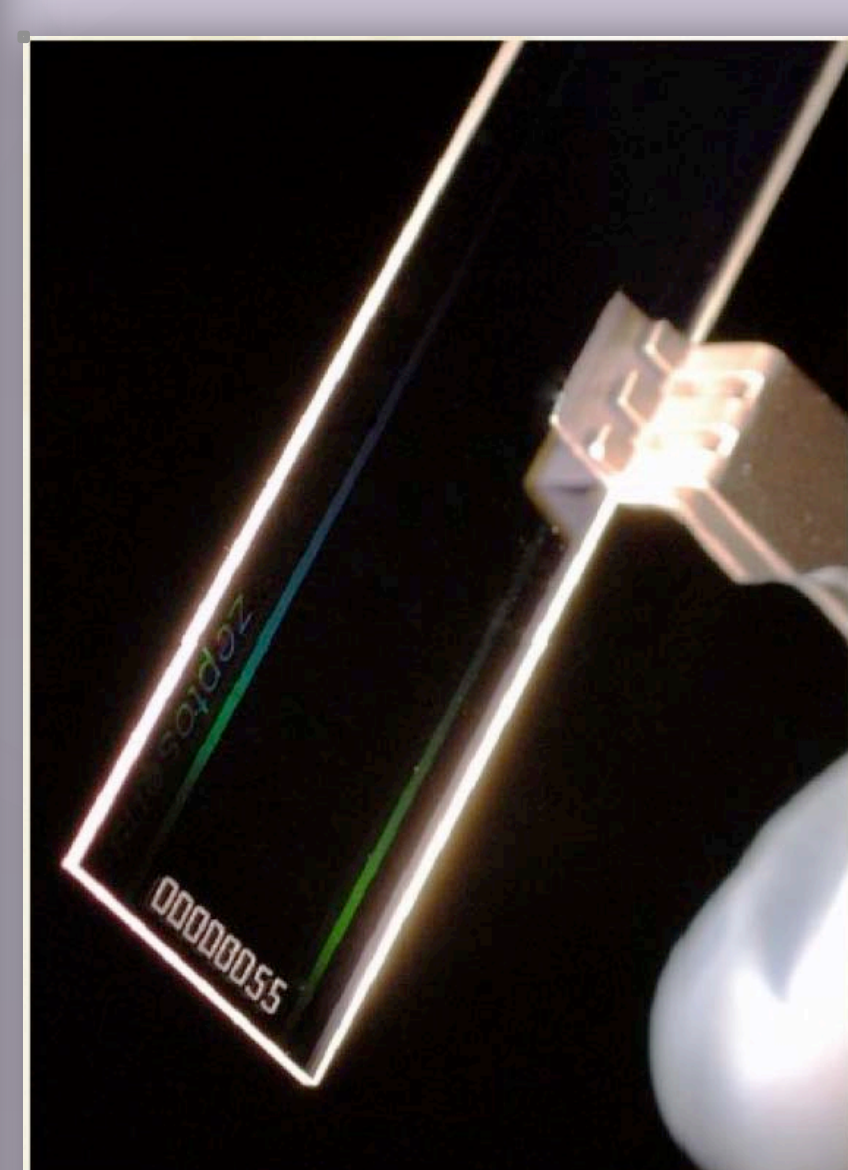
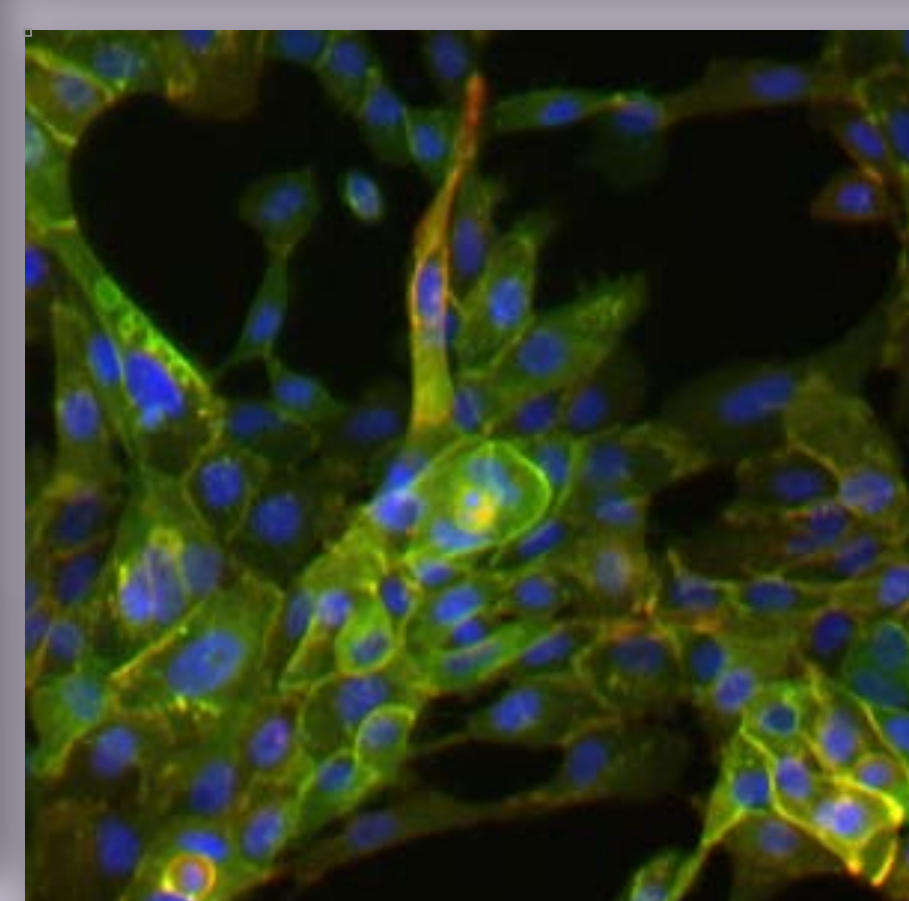
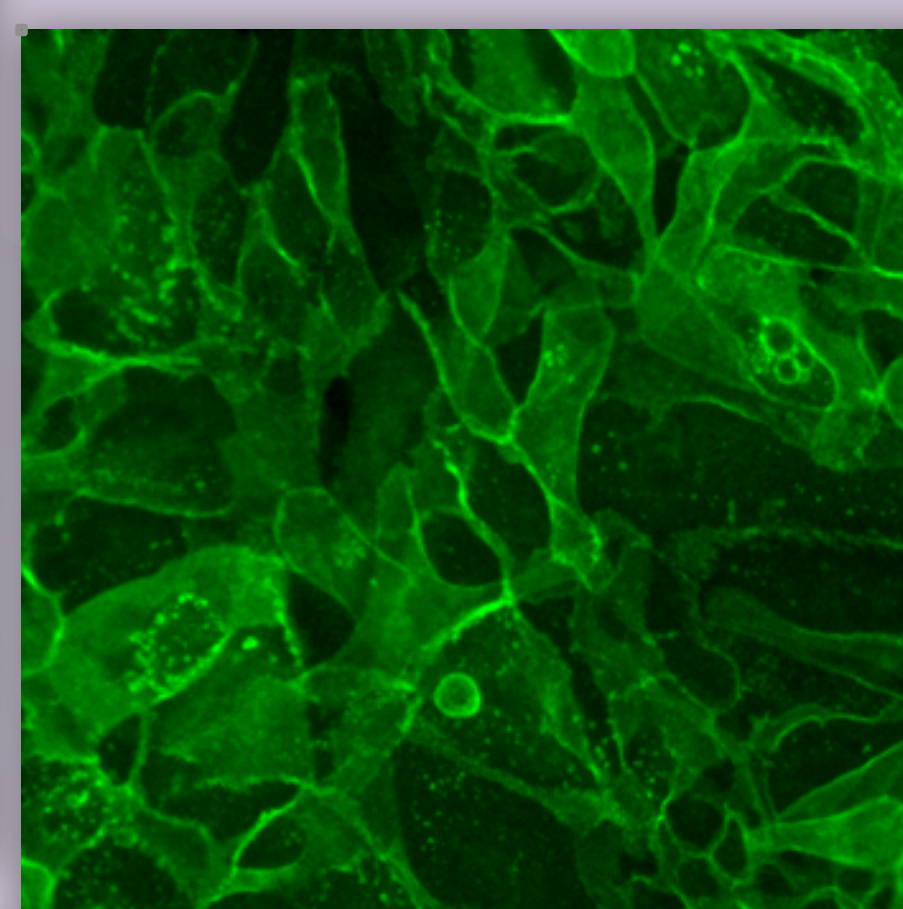
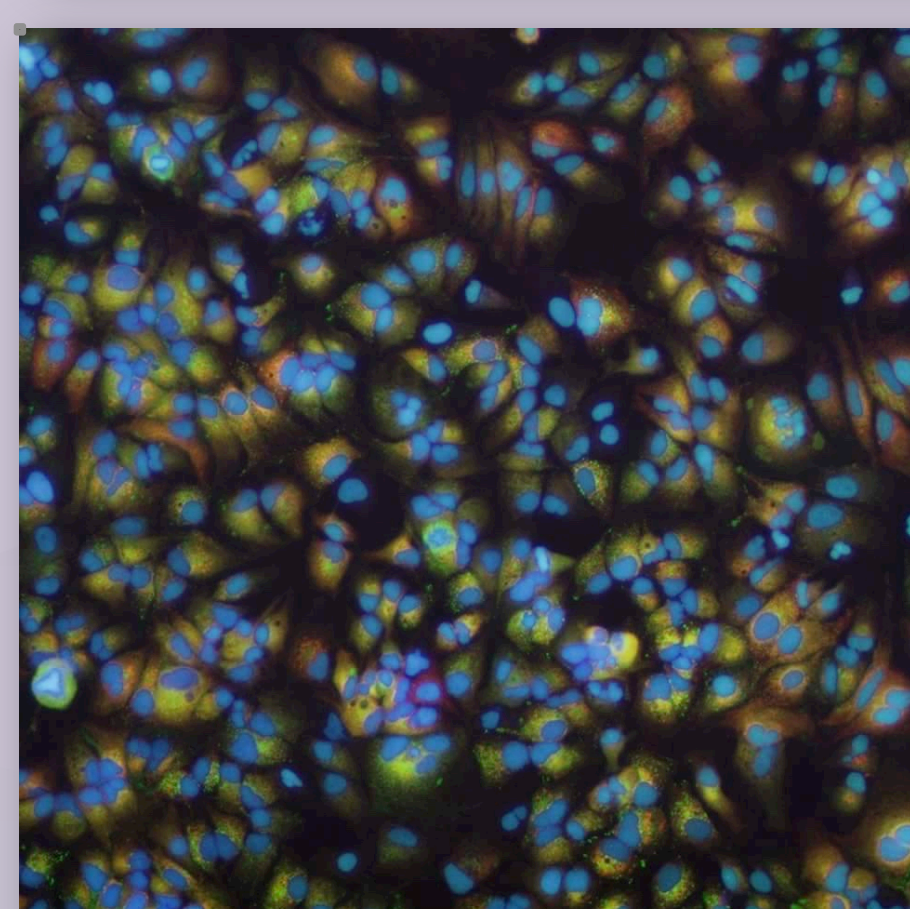
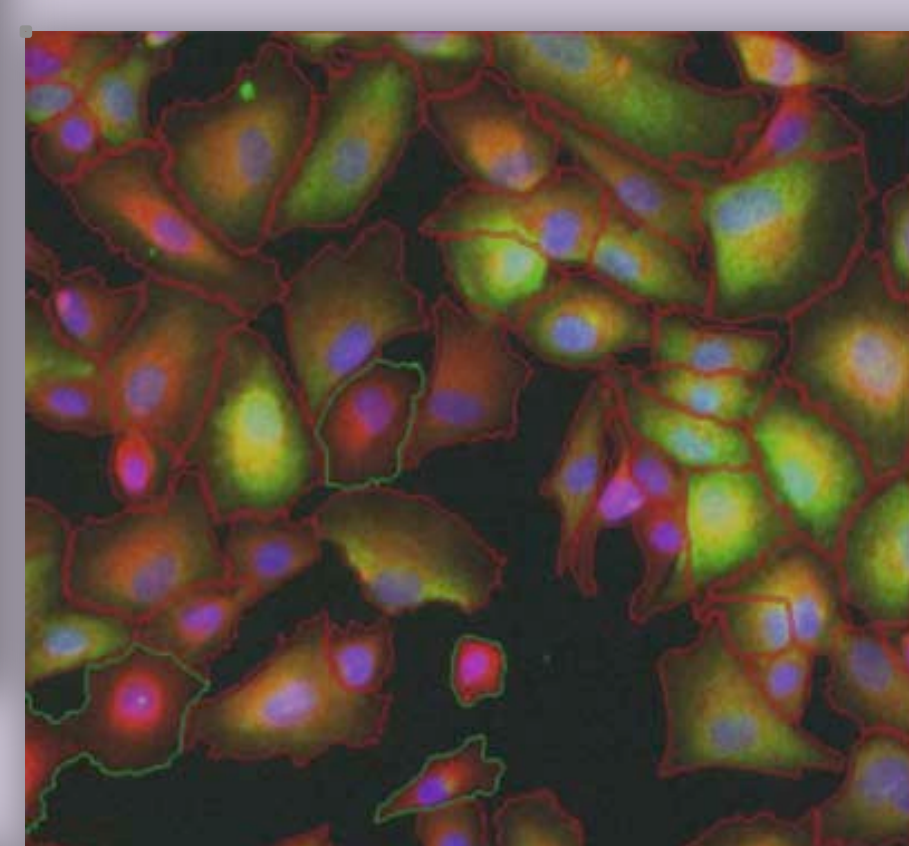
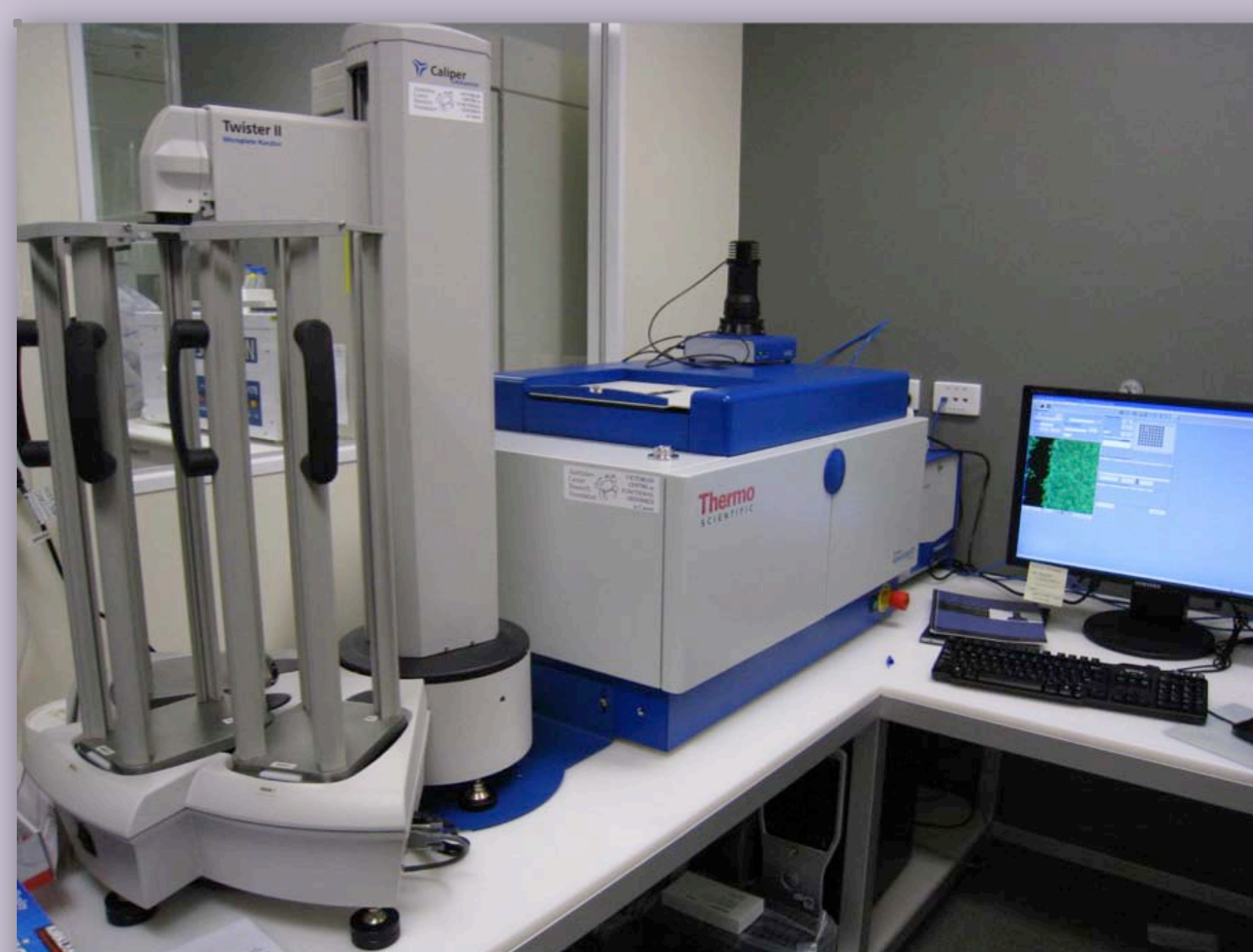
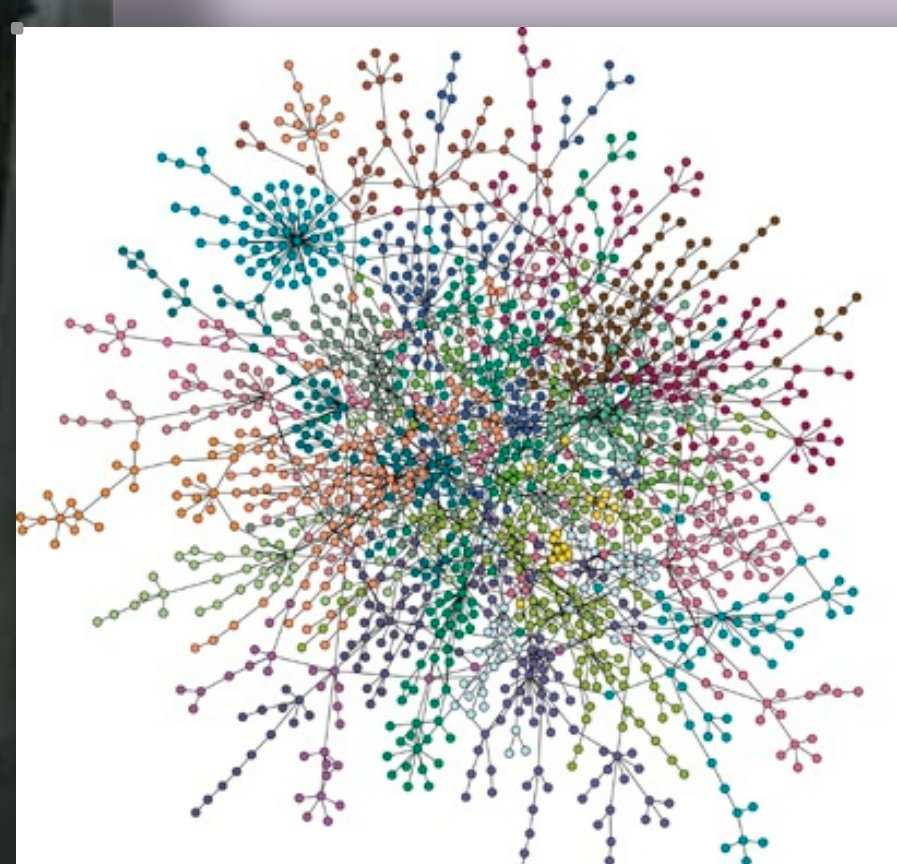


# VICTORIAN CENTRE FOR FUNCTIONAL GENOMICS VCFG



Enabling Discovery and Driving Translational Medicine  
with High-Throughput Technologies

**Peter Mac**  
Peter MacCallum Cancer Centre  
Victoria Australia



## PORTFOLIO

VCFG supports an array of cutting-edge genomic and proteomic technologies for high-throughput gene discovery and investigation of gene function.

Our innovative business model facilitates integration of researchers within VCFG, detailed training on all equipment and full bioinformatics support on each screening platform.

### siRNA platform

- Whole-genome human and mouse arrayed libraries (protein-coding, miRNA and lncRNA)
- All activities performed in automated fashion using state-of-the art equipment

### shRNA platform

- Whole-genome human and mouse pooled viral libraries
- Detailed SOPs developed for virus production, infection, next-generation sequencing

### Reverse-Phase Protein Array (RPPA) platform

- Fully automated platform for quantitation of protein expression and posttranslational modifications
- Over 100 antibodies against human proteins (currently expanding)

### In the pipeline

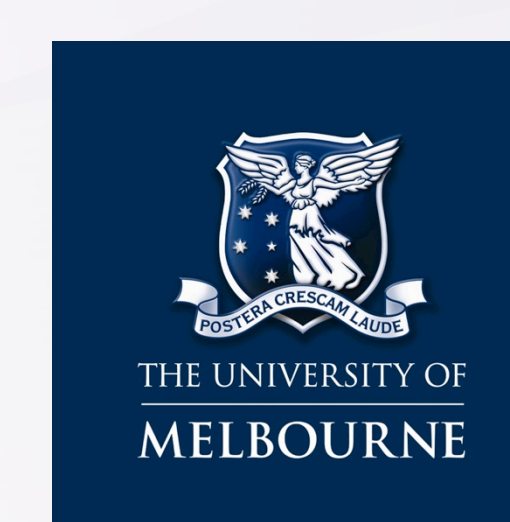
- CRISPR platform for gene knockout based on the synthetic guide RNAs
- CRISPR-based gene tagging and generation of fluorescent reporters

## FUNDING SOURCES

### VCFG



### RPPA



Melbourne Collaborative  
Research Infrastructure  
Program



Department of Anatomy & Neuroscience

Assoc Prof Kaylene Simpson – Head, VCFG

Email [Kaylene.Simpson@petermac.org](mailto:Kaylene.Simpson@petermac.org) | Phone (03) 8559 7509

Web <http://www.petermac.org/research/enabling-research/victorian-centre-functional-genomics>

Web <http://research.unimelb.edu.au/infrastructure/acrf-translational-reverse-phase-protein-array-platform>